



RACINGLINE

Welcome to RacingLine's

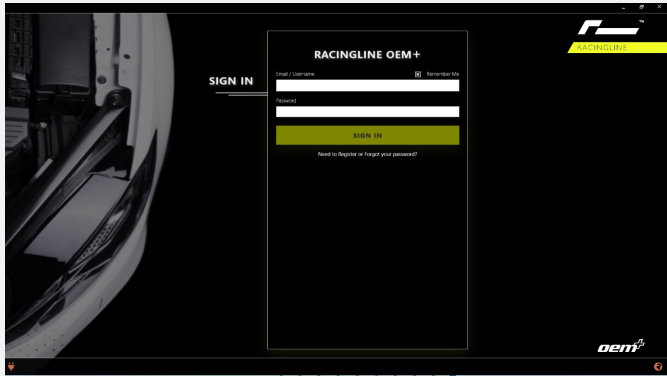
NEW FLASHING TOOL

Quick Start Guide

Welcome to RacingLine OEM+'s new flashing tool. We have invested heavily into our new Server System, giving a more stable platform with faster, more reliable flashing and lots of great added functionality.

Below is a new quick start guide to get you ready to flash using our new flashing tool. We've designed the user-interface to be extremely intuitive, and to guide you through every step of the process.

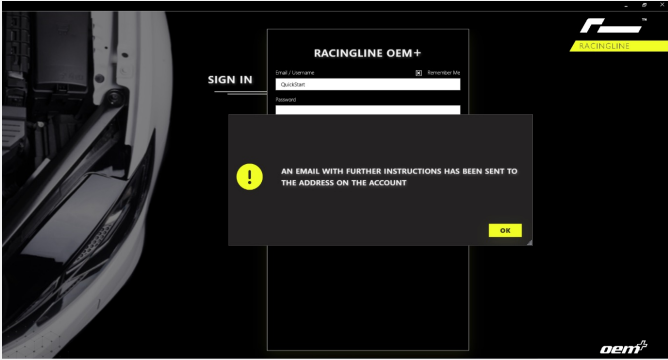
1



Before you can flash any cars, you will need to register your account with the new flashing tool.

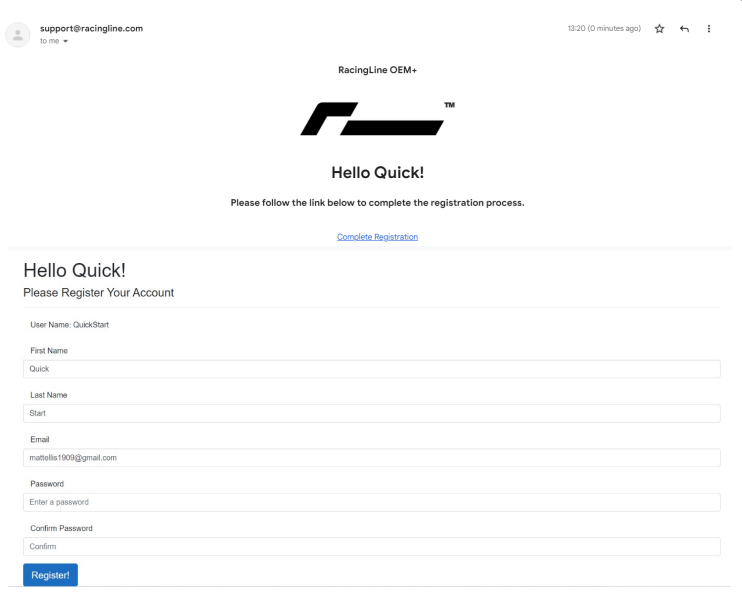
Your previous username and email will be stored, but you will need to enter a new password.

2



Please click register to receive your confirmation email.

3



Your email will look like this.

When clicking the link, you will be prompted to enter a new password. This can be the same as your previous password, but we would recommend changing this for security.

If you don't receive it, be sure to check junk/spam folders.



RACINGLINE

4

Once this password is completed, you can log in to the new flashing tool. You will be greeted with a homepage like this.

5

Press the yellow 'Click Here to Begin' to start flashing. You will then be prompted with the connection window, explaining how to connect to the car and to turn on the cars ignition.

6

If this is your first time using the new flashing tool, then you will need to have your cable updated to the latest firmware. The new flashing tool will take care of this for you but will prompt to tell you this tool will not be compatible with the old flashing tool.

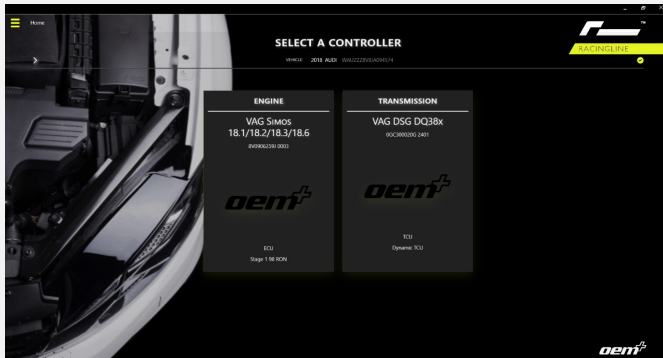
7

To proceed to upload the new firmware, please press 'Yes'.
The upload will now proceed automatically.



RACINGLINE

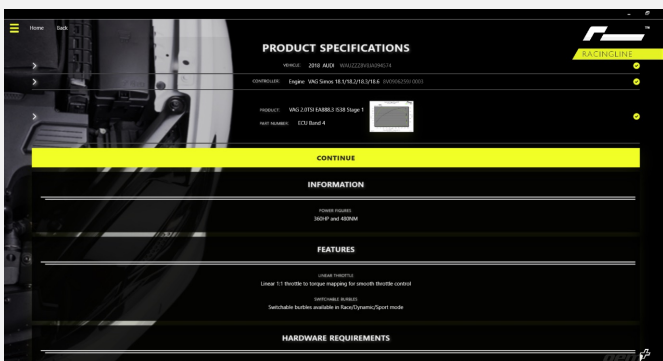
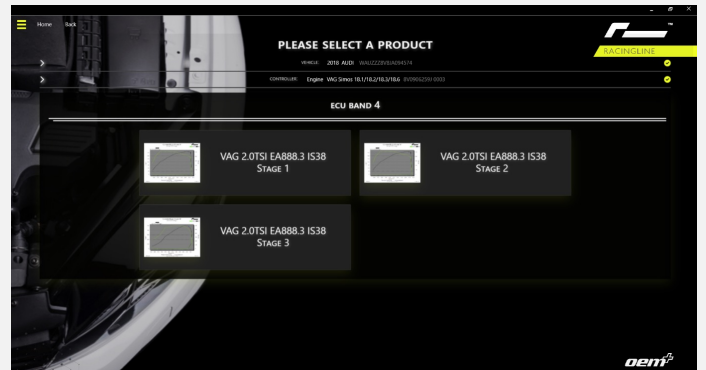
8



Once updated, the new flashing tool will identify the ECU and TCU of the vehicle. Please select which controller you would like to tune.

9

Next is the Product Selection. Here is where you can select your stage of tuning for the vehicle. Once selected, the tool will take you to the specification page.

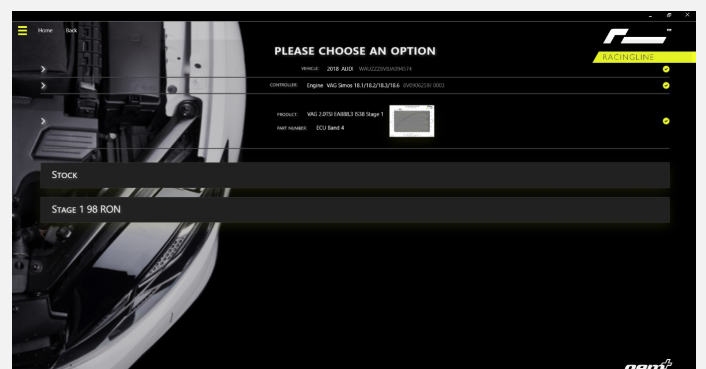


10

This screen now has some useful new features: check see what hardware is required for the calibration, what the expected power figures are, see dyno graphs and any other extended features offered on that specific calibration.

11

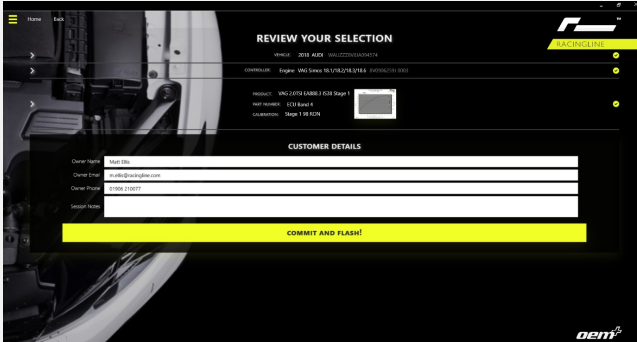
Once you have pressed continue in the specification page, you can now choose from stock, or the tuning stage previously selected. All stages of tuned calibrations will be accompanied by this stock calibration - all of these put the car back to stock.





RACINGLINE

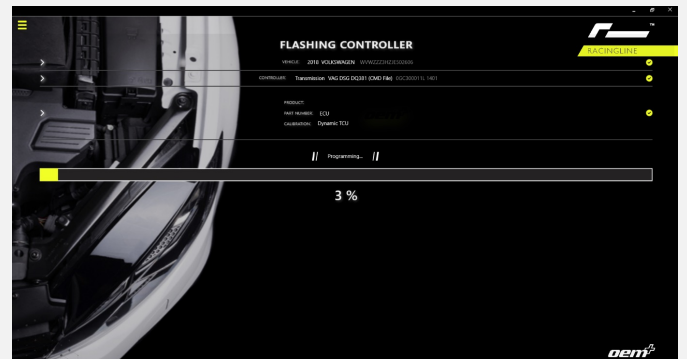
12



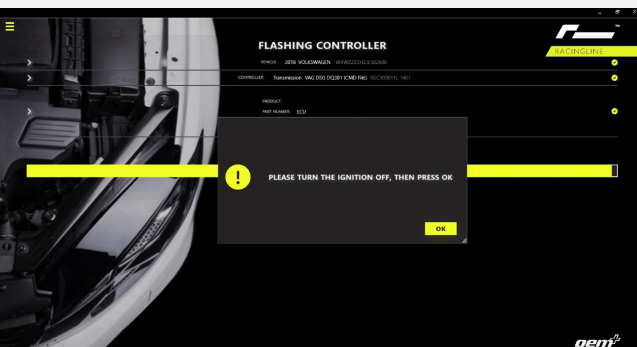
When selected, you will be prompted to fill out the customer information form. It is very important that the customer's *actual* information is used and not blanket information like the dealer address or email. Keeping this information is imperative should there be updates or changes in the future.

13

Next, press 'Commit and Flash' to install the selected calibration. The flashing tool will now flash the car. In some instances, you may need to key cycle mid-flash. This is perfectly normal, and the flashing tool will prompt you to do so.



14



At the end of a flash, you will be asked to key cycle. Please follow the instructions on screen when asked. Once this has been completed the car is has been flashed and is ready for a test drive.

15

Should you have any issues with any steps of this flashing routine, please contact your local importer or technical support.

